

# Envoy

Make your network reliable and available.

## Features

- Load balance across data centers
- Send users to the closest data center
- Fail over to backup sites automatically
- Distribute traffic by administrator defined policy

## Benefits

- Predictable, reliable and consistent
- Mitigates the risk of data center outages
- Delivers disaster recovery for application servers
- Reduces bandwidth costs
- Accelerates end user response time



Envoy ensures business continuity by adding geographic load balancing to Equalizer's application traffic management strength.

## Enjoy Global Server Load Balancing (GSLB)

Server Load Balancing (SLB) brings scalability to the data center. Global Server Load Balancing (GSLB) brings scalability across all data centers. Envoy solves the complex problem of scaling across multiple data centers by directing traffic according to business-defined policies.

Administrators choose how traffic is distributed. Should it be equally balanced? Weighted toward lower cost data centers? Or sent to the geographically closest data center? Envoy makes your decision easy to implement and even easier to manage. It's all completely under your control. You'll be up and running, all day, every day, without even breaking a sweat.

## Subtract Risk

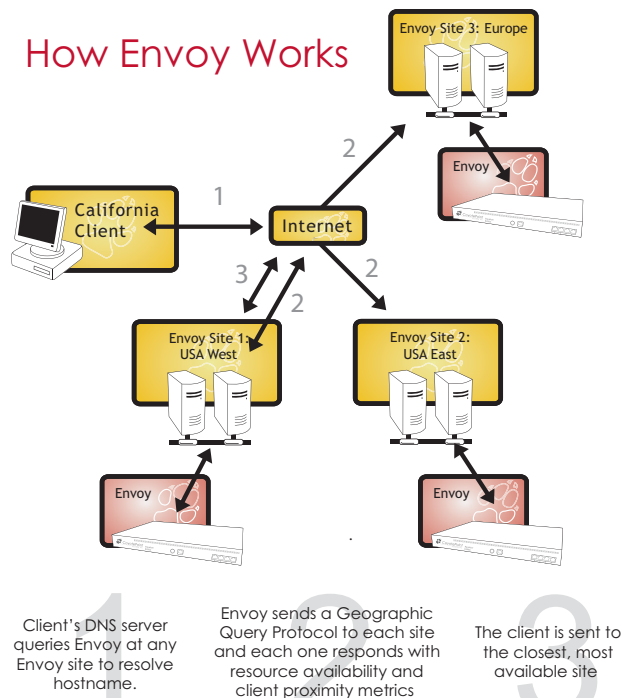
Under Envoy's command, your network will react quickly to unwanted change. You'll survive outages, server failures, outside attacks and natural disasters. Requests will be rerouted effortlessly, with site rollover transparent to end users. Equalizer will continue to prevent bottlenecks, while Envoy ensures disaster recovery, business continuity and revenue protection.

## Predictable, Reliable and Consistent

The bottom line for any business is making sure services offered are predictable, reliable and consistent. Offering that quality means having an infrastructure that promises the same. Envoy delivers on that commitment.



## How Envoy Works



### Let us hear from you.

An industry pioneer, Coyote Point has been at the forefront of application traffic management since 1999. For more information, contact your local reseller, visit [www.coyotepoint.com](http://www.coyotepoint.com) or call (877) 367-2696.



Coyote Point Systems, Inc.  
[www.coyotepoint.com](http://www.coyotepoint.com)  
(877) 367-2696

## Equalizer Specifications

Envoy is a powerful Global Server Load-Balancing (GSLB) tool that complements the Equalizer platform. Lightweight and streamlined, the authoritative DNS server is extremely scalable, reliable, secure and easy to use.

By continuously gathering a collection of performance and availability metrics from each data center, Envoy ensures high availability and appropriate capacity before directing traffic to a particular site.

Coyote Point's sophisticated Geographic Query Protocol™ creates fine-grained wide-area redirection for every client request without a drop of connection latency.

Envoy is easy to install and configure and plugs right into your existing network infrastructure. Single points of failure are eliminated. Redundant failover is fully supported with a secondary Equalizer. And activity logs are recorded and displayed in an easy-to-understand graphical format.

Envoy can be fully configured through Equalizer's Web-browser control panel using these geographic load-balancing criteria:

- Server/Client network proximity or latency.
- Sitewide service availability.
- Sitewide cluster load – directly measured by Equalizer.
- User-defined site weighting.