

# Equalizer E650si



## Application Delivery and Acceleration Appliance

Complete Solution offering Gigabit Performance, Load Balancing, SSL offload, Web Compression and Global Server Load Balancing

### Features

- Multi function appliance with all Gigabit performance
- Intelligent, application-based load balancing
- Integrated hardware based SSL Acceleration
- Integrated hardware based Web Compression
- Integrated Envoy - Global Server Load Balancing (GSLB)

### Benefits

- Guarantees application availability
- Ensures secure and speedy Web page downloads
- Accelerate Web applications up to 5x
- Scales to support hundreds of applications and servers
- Delivers disaster recovery and business continuity



### Comprehensive Application Delivery

The Equalizer 650si (E650si) is an all-in-one application delivery appliance designed to provide superior application performance and availability. With local and global load balancing, built in hardware based SSL processing, and HTTP Web compression, this flagship Equalizer appliance has everything you need to insure your applications are always available and performing at peak speeds.

### Enterprise Class Capacity

Never before has capacity planning been made so easy. The high performance E650si scales to data center class capacity with throughput at all gigabit speeds. The individual processors dedicated to SSL acceleration and Web objects compression offer the performance you need to deliver Web content that is fast and secure. In addition to high throughput, the E650si scales to support an unlimited number of servers.

### Faster SSL and Lower Bandwidth requirements: Secure and Efficient

More and more applications require higher levels of access security. Additionally website operators must offer fast response times to minimize website abandon rates. By moving CPU intensive SSL acceleration and compression of Web content from your servers to the Equalizer, businesses benefit from the E650si "power of three". With three individual processors dedicated to load balancing, SSL acceleration, and web compression the result is secure and efficient processing of your Web traffic. Both you and your users win as end user response times improve up to 5x while bandwidth requirements plummet as much as 50%.

### Business Continuity with Global Server Load Balancing (GSLB)

Envoy Global Server Load Balancing (GSLB) extends performance and scalability across multiple data centers according to business-defined policies that are matched against real-time data center performance and availability. Redundant "Active-Active" failover is fully supported with a secondary Equalizer so you'll be up and running all day, every day.

### Easy to install, even easier to use

Our intuitive administrative interface provides a dynamic, user friendly experience for ease of setup and management. Configuration wizards lead users through the set-up process for clusters, servers, match rules, and failover configurations. Using AJAX technology all on-screen objects are interactive. A simple mouse rollover of an object gives users quick and easy graphical view of configuration and status. Easy access to summary statistics of clusters and servers with the ability to drill down to fine-grained details takes the guesswork and complexity out of application traffic management.

### Predictable, Reliable and Consistent

The bottom line for any business is making sure services offered are predictable, reliable and consistent. The E650si helps you deliver on that commitment with dedicated processing power, comprehensive application delivery capabilities, and superior reliability.



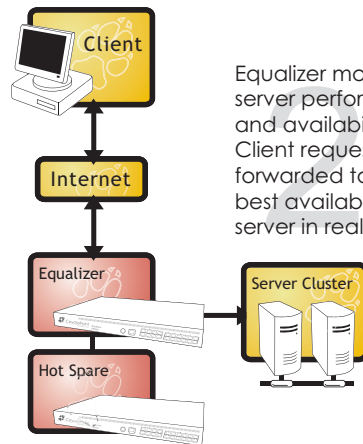
# Equalizer E650si

## E650si Performance and Capacity

L7 Requests/Sec	100,000/Sec
Throughput	All Gigabit
Max Virtual Clusters	Unlimited
Max Servers per Cluster	512
Max Servers	Unlimited
Max Concurrent Connections	12 Million
Compression Throughput	1 Gb/s
SSL Offloading	2,000 Transactions/second
Military Grade Security	Up to 4,096 bit keys
Ethernet Connectivity	21 x 10/100/Gigabit
Network Topologies	Full-NAT, Half-NAT, Direct Server Return (DSR)

Equalizer's Virtual Clusters provide a single IP address to the client.

Fully redundant configuration ensures no single points of failure.



Equalizer monitors server performance and availability. Client requests are forwarded to the best available server in real time.

## Let us hear from you.

An industry pioneer, Coyote Point has been at the forefront of application delivery since 1999. For more information, contact your local reseller, visit [www.coyotepoint.com](http://www.coyotepoint.com) or call (877) 367-2696.



## Equalizer E650si Specifications

### Applications Supported

All Web/HTTP based applications, including PHP, ASP, Oracle, Apache, etc. Microsoft Products including SharePoint, Exchange, Outlook Web Access and Remote Desktop. SSL VPN, Database clustering, Email services, Streaming Media.

### Supported Protocols

Most TCP/IP and UDP based protocols including HTTP, HTTPS, SSL, SMTP, POP, IMAP, FTP, SQL, DNS, WAP, RADIUS. Management via SNMP, SSH, HTTP & HTTPS

### Acceleration Algorithms

Server latency, adaptive weighted server latency, least connections, weighted least connections, round robin, weighted round robin, direct server measurement.

### Persistence Methods

Cookies, client IP, client network, header match rules.

### Compression Algorithm

GZIP

### Data Compressed

HTML, Office Document, Executables (.Exe), XML, CSS, PDF, SHTML, DHTML, JHTML, PHTML, JavaScript, JSP and other similar files.

### Cryptographic Functions Supported

IP Security, Secure Sockets Layer (SSL), Transport Layer Security (TLS), Internet Key Exchange (IKE), Private Key Encryption/Authentication, DES-CBC, 3DES-CBC, RC4, SHA-1, MD5, Public Key, Diffie-Hellman, RSA, DSA, Hardware Random Number Generator

### Server Failure Detection

Layer 7 via active content verification. Layer 4 via ICMP and TCP health check.

### Fault Tolerance / Business Continuity

Full system-level redundancy supported (requires two Equalizers). Server heartbeat and configuration data exchanges over attached Ethernet(s).

### Management

Secure Web based administration and management GUI, SNMP, command line interface via Serial, SSH.

### Reporting

Records up to seven days' performance history. Delivers highly detailed graphical reports with very fine granularity.

### Support

8x5 phone and email support included for one year. 24x7 phone and email support available. Advance replacement available. Hardware warranted defect-free for one year.

### Physical

H 1.75" W 19.0" D 15.75"

### Weight

15lbs.

### Power

115/230 VAC auto-detecting  
50/60 Hz 3.0A.

### Certifications

FCC, CFCC, UL, CAN/CSA, CE, VCCI, C-Tick, CB, IEC950, RoHS.

### Environmental

Temperature: 40-105 F, 5-40 C.  
Humidity: 5-90%, non-condensing.